

# Head end table shield

313/A3-001 (for use with a 500 mm wide Allura AD7 table)  
 313/A3-001/W (optional wall rack)

## Shield attaches to the 4 mm thick carbon fibre table top at the head end

This lower body table shield reduces exposure to scatter radiation emanating from the table or patient's body. It slides onto the head end and protects physicians or others nearby. It comprises a 57 cm wide central section and two 31 cm wide pivotal side wings, supporting an 80 cm long flexible 0.5mm Pb equivalent curtain. The wings can extend along the table or around the user. The flexible 57 cm wide x 27 cm high top shield folds down when required.

## Features

- > The shield slides onto the carbon fibre top and maintains its position by means of side friction clamps, which allows simple positioning, but prevents unwanted slip even when the table is tilted.
- > The two pivotal side wings can be formed around the user without gaps or extended along the table then folded neatly away according to preference. They can be quickly repositioned to allow full C-arm movement.
- > The flexible 0.5 mm Pb top shield can bend toward the patient or fold down when required or be removed completely.
- > The optional wall rack provides convenient storage after use. Once secured to the rack the shield side wings fold neatly inwards to reduce wall space.



## Weights, dimensions & ordering information

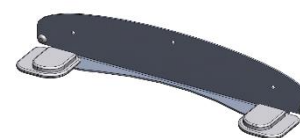
Weights and dimensions are subject to manufacturing tolerance

**Product code:** 313/A3-001

**Total width:** 119 cm  
 Central section: 57 cm  
 Pivotal arms: 31 cm each side

**Height:** 80 cm

**Shield weight:** 15 kg



Optional wall rack 313/A3-001/W