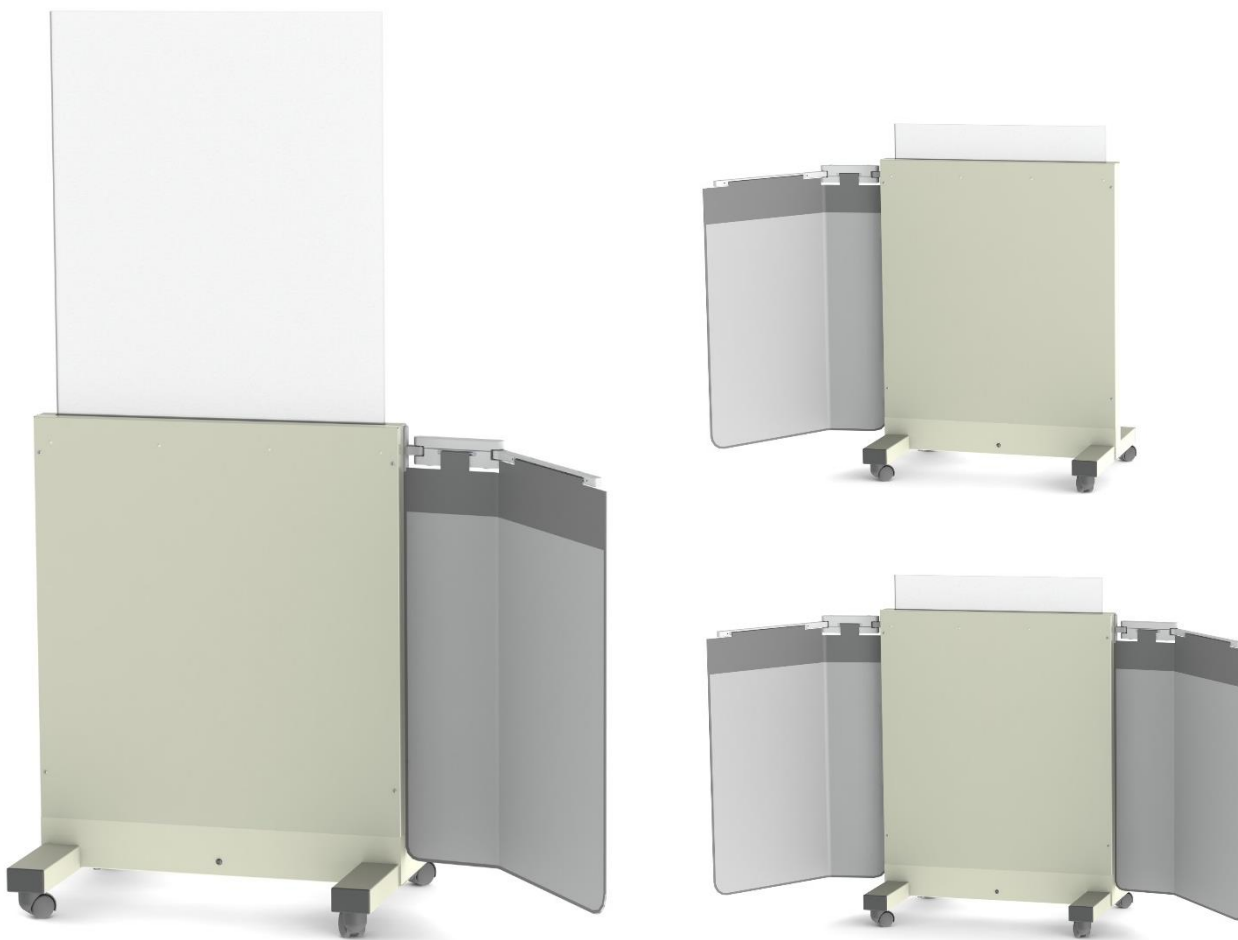


Flexible protective side panel

317 Protective side panel (factory fitted to mobile shield model 310/B-3)

Factory fitted flexible protective side panel

A flexible curtain on a double-jointed pivotal arm which can be factory fitted to either side, or to both sides of mobile shield 310/B-3.



Features

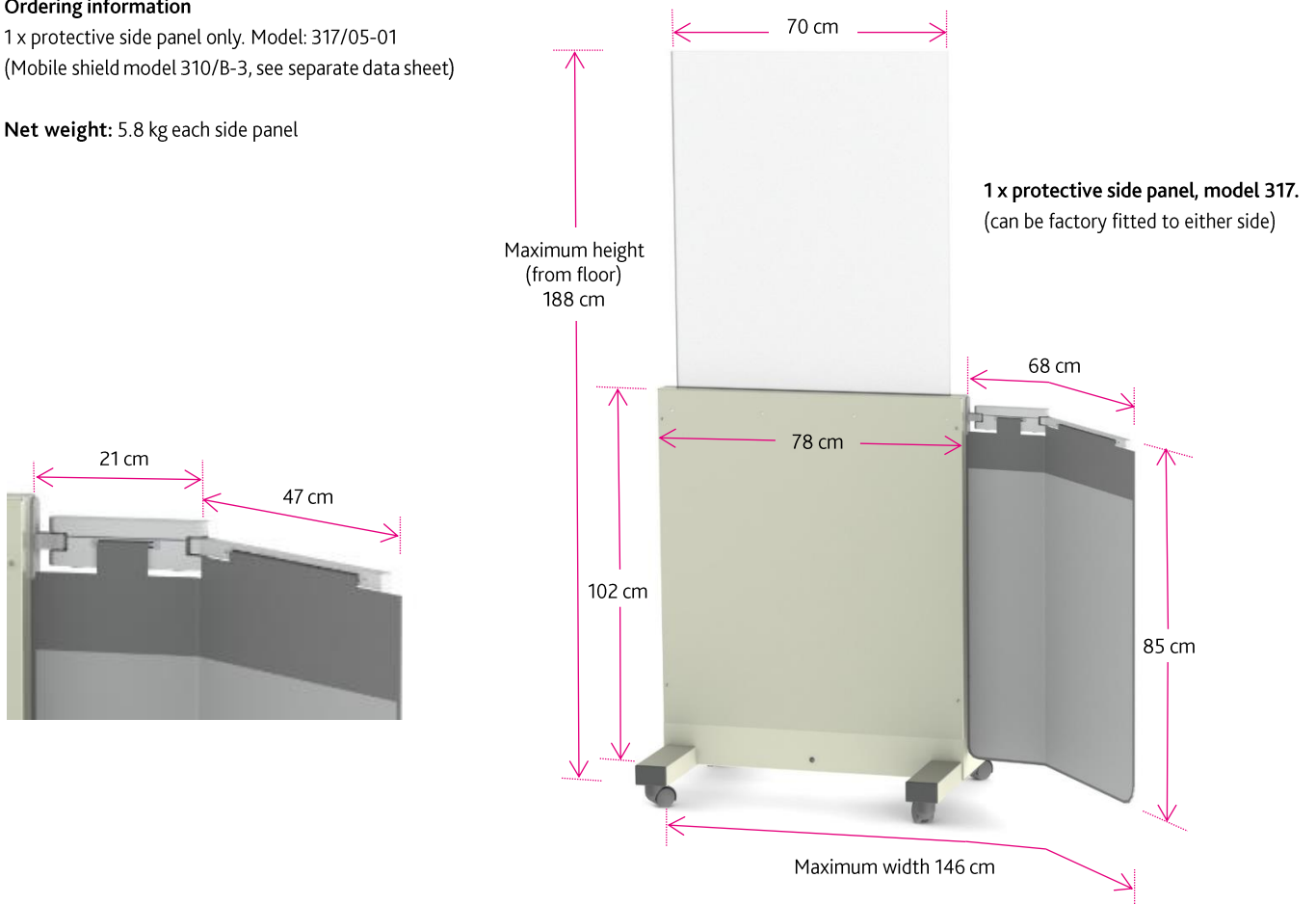
- > One curtain, when fully extended increases the shield width by 68 cm.
- > Pivotal arm and curtain can swivel round to form a curved side wing.
- > Flexible 0.5 mm curtain is 85 cm long.
- > Curtain folds across the front when not in use.
- > For mobile shield specifications please refer to the 310/B-3 data sheet.

Weights, dimensions and ordering information

Ordering information

1 x protective side panel only. Model: 317/05-01
(Mobile shield model 310/B-3, see separate data sheet)

Net weight: 5.8 kg each side panel



2 x protective side panel, model 317.
(factory fitted)

